



Bellinghen Public School

William Street
PO Box 42
Bellinghen NSW 2454

Principal:
Phone:
Fax:
Email:
Web:

Vanessa Cavanagh
02 6655 1147
02 6655 2615
bellinghen-p.school@det.nsw.edu.au
<https://bellinghen-p.schools.nsw.gov.au/>

01 August 2023

Dear Parents and carers

James Power, Roads Engineer with Bellinghen Shire Council has provided information around the new footpath and school crossing arrangements. Council have developed a vehicle movement plan for the area to assist with Pick-up and Drop-off times at the school. Over the next 2-3 weeks signage and linemarking will be updated to reflect the plan.

The Bus Pick-up/Drop-off area to the north of the crossing is designed to accommodate two buses at the designated platforms. A five bay Bus staging area is provided to the south of the school between South St and Bowra St on the school side. All buses should initially park in the bus staging area when they arrive in Lovell St and await their turn to move down to the pick-up/drop/off area. Once the pickup/drop-off area is clear the next two buses should move down. Bus Pick-up/Drop-off of children should not occur in any other location.

A 'Kiss and Drop' zone is marked in blue and is directly in front of the school entrance for parents. A kiss and drop zone has exactly the same rules as a "No Parking" sign during the school zone times. You are allowed to pull up and assist your child to exit via the pavement side door - "the safety door". You may get out of the car to unload baggage, but you must remain within three metres of the car. And you must leave within two minutes. The zone operates as a Kiss and Drop zone from 8.00 – 9.30am and 2.30-4.00pm only. It is parking at all other times.

The children's crossing has been moved to in front of the school beside the 'Kiss and Drop' Zone. It has red and white striped poles and flags to indicate this area. Please use this when crossing the road. **There is no longer a crossing zone near the hall.** Please do not climb the embankment to access the hall gate. Access is via the footpath.

No stopping signs will be in place for all areas in Lovell Street.

This is a change for students, staff, parents, and buses and will be implemented properly over the next 2 weeks. If you have any queries, please contact the Bellinghen Council to discuss.

A plan is provided on the reverse of the letter for clarification.

Thank you for keeping our students and community safe.

Regards

Ness Cavanagh
Principal

BELLINGEN PUBLIC SCHOOL MOVEMENT PLAN



NOTE:

BUSES

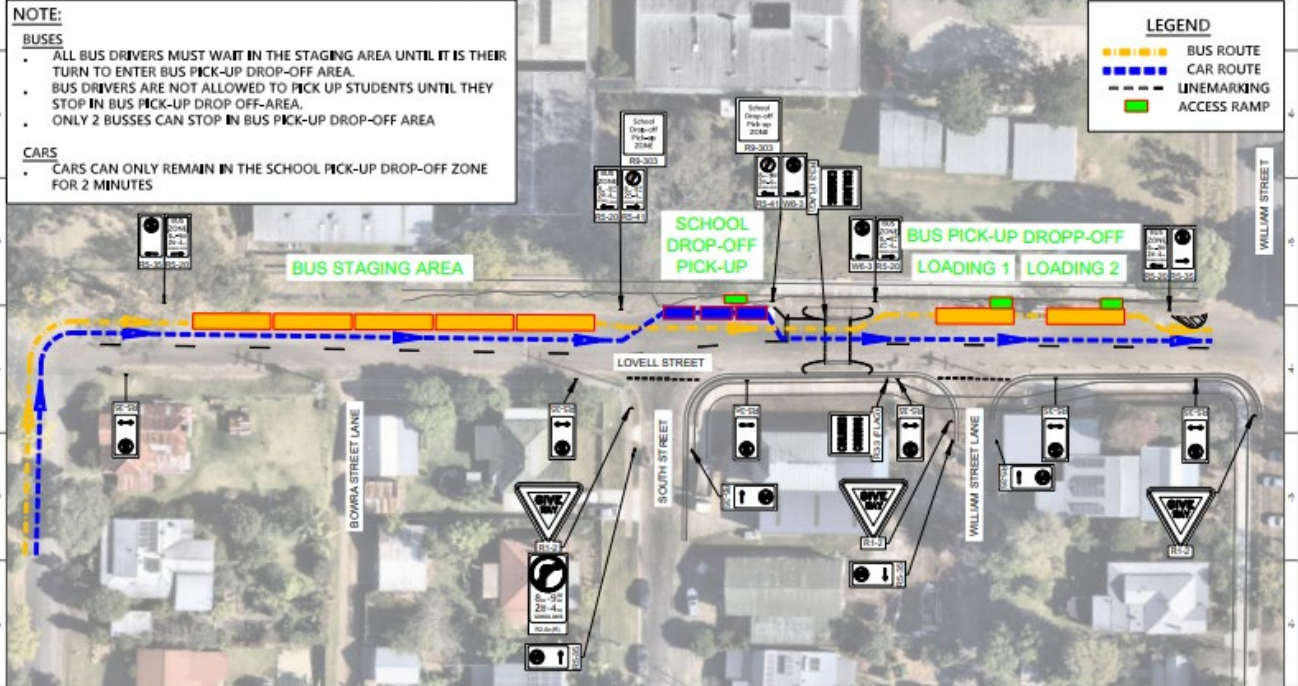
- ALL BUS DRIVERS MUST WAIT IN THE STAGING AREA UNTIL IT IS THEIR TURN TO ENTER BUS PICK-UP DROP-OFF AREA.
- BUS DRIVERS ARE NOT ALLOWED TO PICK UP STUDENTS UNTIL THEY STOP IN BUS PICK-UP DROP OFF-AREA.
- ONLY 2 BUSES CAN STOP IN BUS PICK-UP DROP-OFF AREA

CARS

- CARS CAN ONLY REMAIN IN THE SCHOOL PICK-UP DROP-OFF ZONE FOR 2 MINUTES

LEGEND

- BUS ROUTE
- CAR ROUTE
- - - LINEMARKING
- ACCESS RAMP



ISSUE	DESCRIPTION	DATE
A	FOR INFORMATION	28/07/23

NOT FOR CONSTRUCTION



BELLINGHEN SHIRE COUNCIL

PROJECT
LOVELL STREET 3 FOOTPATHS
LOVELL STREET, BELLINGHEN

SHEET
LINEMARKING AND SIGNAGE
GENERAL ARRANGEMENT

SCALE	1:250	DRAWN	HG
GRID	GDA2020	DESIGNED	HG
H DATUM	AHD	CHECKED	
		APPROVED	
STATUS NOT FOR CONSTRUCTION TO BE ISSUED FOR INFORMATION			
PROJECT & DRAWING NUMBER C102			SHEET A3
			ISSUE A