



# Bellinghen Public School

*'Courtesy and Knowledge'*

William Street  
PO Box 42  
Bellinghen NSW 2454

Email: [bellinghen-p.school@det.nsw.edu.au](mailto:bellinghen-p.school@det.nsw.edu.au)  
Website: <https://bellinghen-p.schools.nsw.gov.au/>

Principal: Vanessa Cavanagh  
Phone: 02 6655 1147  
Fax: 02 6655 2615

Term 3 Week 9

Monday, 12 September 2022

## From the Principal

Dear parents and carers,  
Welcome to week 9.

Our Kindergarten Orientation Tabloid Sports morning will be held this Friday from 9:30am for all students who are starting school with us next year in Kindergarten. Pre-schoolers and their parents are to meet us under the hall shelter and we will all head to the oval for a games morning. If you know of any children who are beginning school next year who haven't enrolled yet, please ask them to contact the school for more information.

Year 4 will be heading to Cascades Education Centre this week for a 3 day camp. We know the students and staff will have a great time with bush walks and environmental activities. Thank you to Ms Williams, Mrs Healy and Mr Hillery for accompanying the children.

Our postponed Education Week activities will be held on Wednesday 21<sup>st</sup> September. A Breakfast BBQ will start at 7:30 under the small shelter. Parents and carers can then go into their child's classroom to look at their work and chat to the class teacher from 8:30am. We will hold a Whole School Assembly in the hall from 9:30 where our band will join the string group for entertainment and the Student of the Month Awards will be handed out.

Congratulations to Mr and Mrs McBay who welcomed the safe arrival of a daughter last Saturday. We can't wait to meet the newest addition to their family.

This week the Tell Them From Me survey is open for students, teachers and community. Please take the time to complete the parent survey. It gives the school direction for improvements across numerous areas at school. To access the survey for our school go to: <http://nsw.tellthemfromme.com/5d9hn>

Year 6 will be completing Check In Assessment this week for Literacy and Numeracy.

A hockey gala day is being held in Coffs Harbour on Tuesday for students in Year 5 and 6. Permission notes have been sent out for those interested. Students will meet Ms McCormick and Ms Everson at the hockey fields in Coffs Harbour. Mouth guards and shin pads are mandatory for all players.

Country Fair is fast approaching. This is a student led Fair that will be held from 12:30 to 1:45 on Friday 23<sup>rd</sup> September. Everyone is welcome to attend and join in the fun.

This Saturday our strings groups will be performing at the markets from 11:00 -11:20 on the main stage. If you are

at the markets at this time, please come down and listen to our students. They are amazing young musicians.

A reminder that the canteen will be CLOSED this Friday and next Monday.

School hats are mandatory for playing in the sun at school. If your child requires a new hat please contact the school. Uniform price lists and forms are available from the office if you require one. Our P&C have endorsed the current uniform and we ask that students wear them every day.

At Bellinghen Public School we are SAFE, RESPONSIBLE and RESPECTFUL. Please support our students by modelling these values at and around the school especially when picking up and dropping off students. Have a great week everyone!

**Ness Cavanagh, Principal**

## P & C Twilight Fete

Hello everyone and thank you to everyone who has responded to the blue notes that went out asking for volunteers to help make the twilight fete happen this year on Saturday 5<sup>th</sup> November, 3-7pm. The fete is a different and separate event to the Country Fair. There has been some confusion about this.

We do still need class stall coordinators for the following classes 3A, 3M, 5P and 6M. If you are a parent from these classes we would love to hear from you. There are still some fun stalls to coordinate. We do have people organising the music and external activities. So we are looking now for people to volunteer on the day and to take on coordinating the above classes.

We are also looking for a First Aid Officer for the day. All volunteers need to have a working with children check which is free to apply for through service NSW, the P&C needs a copy of this.

You can email or call Kim Childs with any questions on [kimchilds3@gmail.com](mailto:kimchilds3@gmail.com) or 0438679259. Thank you so much for your support so far.

## Bellinghen P & C

### Bus Travel

Due to the increased volume of students who don't normally travel on Keough's Bus Service in the afternoon to go to friends, family's residence, the High School or somewhere other than their home address. Please ensure all students have a note to accompany the Student notifying the Driver of the following:

- Name of Student travelling
- Contact Number
- Address the Student is travelling to

# Country Fair

A student lead fundraiser for our school.

**Friday, 23<sup>rd</sup> September ~ 12:30-1:45pm**  
**Students will receive 5 tokens – free!**

**Students can bring their own money too**  
 and exchange it for Country Fair tokens to be used at each stall. They *will not* be carrying / using real money with them during the Country Fair.  
 All stalls will cost 1 or 2 'tokens'.  
**Lots of stalls ~ there might be.....**

**cakes paper plane competition**  
**knock 'em down obstacle course**  
**guessing competitions icecreams**  
*games galore and much more.*



**Giant kids raffle with loads of prizes!**  
**Parents welcome.**  
**Bring your money with you!!**



## Music News

### Sydney Choir

Purchase your tickets for the concert in Sydney this Wednesday, September 14.  
 Details are on the yellow note.

### Bellingen Markets

String players are performing this Saturday, September 17 from 11:00-11:30am. Come and support us please.

### Whole School Assembly

Wednesday September 21. The Band and Strings will play 'James Bond' Theme Music for your enjoyment.

### String Concert

Friday September 23<sup>rd</sup> 2-3:10pm.

Including both Junior and Senior Ensembles, Soloists, small ensembles, and guest performer Esther Henderson (2004 School Captain) This is not just for parents of string players. If your child is loving stringed instruments, bring them along too. The gold coin donation for this concert will go towards a new saxophone which is dearly needed. 🎵🎸🎻🎷🎹

### Does your Child want to Learn

To sing beautifully, play cello, wrap around a double bass or play the trombone? We have teachers at the ready. Fill in an application to learn any of these instruments 🎵🎸🎻🎷🎹 at the front office and Miss Scott will find you the teacher. (Bagpipes excluded!!)

**Elizabeth Scott, BPS Music Co-ordinator**

## Uniform Shop

Our Uniform shop is open on Friday from 8:40-9:30. Uniform order forms are available from the office or on the school website under *CURRENT NOTES*. Please note, payment must be made by cash or cheque.

## 2 Weeks Until Country Fair

There has been lots of discussion and planning in classrooms this last week leading up to the Country Fair.

We can now add coloured hair spray,



a teacher baby photo guessing competition, used book stall and possibly a

haunted house to the mix of stalls being run by classes, along with handballs, the giant raffle and cupcakes!



This will be held on Friday 23<sup>rd</sup>, the last day of this term between 12:30 and 1:45pm. Country Fair is a student organised and run fundraiser which is always great fun and well supported. Parents are welcome to attend from 12:30. It will conclude at 1:45pm (recess).

The canteen will not be open on this day. Students can buy a sausage sizzle lunch on this day. Sausage sizzle orders must be at school by Wednesday 21<sup>st</sup>.

**Mrs Mulligan, Organiser**

## Canteen Closed

Please note the Canteen will be closed on the following days, Friday 16<sup>th</sup> September and Monday 19<sup>th</sup> September.

Lunch and recess will not be available on these days. We apologise for any inconvenience and would appreciate all parents ensuring their child/ren bring lunch and recess on both these dates.

## School Organisation

### Bell times for our school

8:40	First bell – Teacher on duty
9:00	Line Up
9:05	Class
11:05	Eating
11:15	Lunch 1 (no bell)
11:35	Lunch 2
12:00	Class
1:45	Recess
2:10	Class
3:10	Home

### School Office Hours

Our office is open from 8:30-3:45 Monday to Friday. If you ring out of these hours please leave a message on our answering machine. We will follow up the message on the next business day.

### Contacting staff

If you wish to contact a staff member, please email the school on [Bellingen-p.school@det.nsw.edu.au](mailto:Bellingen-p.school@det.nsw.edu.au). Please put a brief outline of the reason to ensure the staff member has the information you need before they contact you. Staff will contact you either by phone or email as soon as possible.



### Tell Them From Me Survey

From Monday 5th September to Friday 4th November, our school will be participating in the Partners in Learning parent survey, another part of the Tell Them From Me suite of surveys (student, teacher and parent surveys) on student engagement. The survey asks parents and carers questions about different factors that are known to impact on student wellbeing and engagement.

Completing this survey will help our school understand parents' and carers' perspectives on their child's experience at school. These include: communication between parents/carers and staff, activities and practices at home and parent/carer views on the school's support of learning and behaviour. This valuable feedback will help our school make practical improvements.

The survey is conducted entirely online on smartphones, iPads, tablets, laptops or computers. The survey will typically take 15 minutes or less to complete and is completely confidential.

The parent survey can be accessed from Monday 5th September until Friday 4th November 2022.

Although participating in the survey is entirely voluntary, your responses are very much appreciated.

More information about the survey is available at: [education.nsw.gov.au/ttfm](http://education.nsw.gov.au/ttfm).

To access the survey for our school go to: <http://nsw.tellthemfromme.com/5d9hn>

### Eat Fresh and Win!

Eat Fresh for Kids entry forms should be returned by Friday 16 September 2022. This is also the date the campaign will end. I will then mail all entry forms ASAP, so they arrive at Sydney Markets before Friday 23rd September 2022.

For further details, and information on prizes you can check out the website [www.freshforkids.com.au](http://www.freshforkids.com.au)



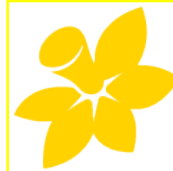
Jen DaConceicao, Canteen Manager

## Kindergarten 2023

Do you have a child at home who will be coming to our school in 2023?

Please call us on 6655 1147 so we can add your child to our 2023 Kindergarten enrolment list.

Our transition program is now available.



## Cancer Council Healthy Lunch Box

### Lunch Box Builder



### What's inside?



[Easy pizza](#)



[Greek salad](#)



[Beetroot and spinach bliss balls](#)



Pear



Yoghurt tub



Water

### Innovations - School Orchestra

Our Senior String Players are teaming up with the Band to form an orchestra of more than 30 students. This is especially fun for the players as they meet up with their friends playing different instruments and all feel very proud of their individual playing (strutting their stuff) before the excitement of playing together, where they tackle complex rhythms, learn about blending sounds and work towards producing a professional performance. You can hear this combined orchestra play James Bond at the Special Whole School Assembly on Wednesday 22, Week 10.

Band players are reminded to bring their instruments on Thursday and Friday of this week.

### Current Notes

**These notes are current and can be found on the Bellingen Public School website under *Current Notes* and/or *Events***

- Sydney Town Hall Choir Excursion (yellow)
- Years 5 & 6 Lake Keepit – Camp Information (purple)
- Cascade Excursion- Updated Camp Information
- Check In Assessment for year 6 (
- Tell Them From Me Survey (white)
- Year 4 Cascade Excursion – Covid-19 Acknowledgement (green)
- Country Fair – Sausage note (yellow)



# A Day in 6A

LOOK HOW GREAT EVERYONE WAS AS CHARACTERS AT BOOKWEEK. THERE WERE A FEW APPEARANCES OF CHARACTERS FROM BOY OVERBOARD, OUR NOVEL STUDY.

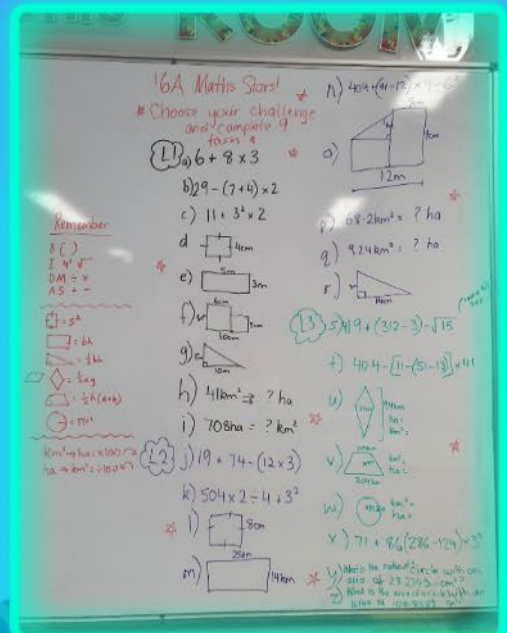
THIS TERM IN CAPA WE HAVE BEEN LEARNING HOW TO PLAY UKULELES. WE LEARNED TO PLAY 'WHEELS ON THE BUS', 'HOT CROSS BUNS' AND 'RIPTIDE'



**DID YOU KNOW THAT 95% OF STUDENTS IN 6A SAY THAT SPORT IS THEIR FAVOURITE SUBJECT?**







**6A ARE SERIOUS MATHS STARS! WE HAVE RECENTLY BEEN LEARNING AREA, THE ORDER OF OPERATIONS, FRACTIONS AND PROBABILITY. HERE ARE SOME DIFFERENTIATED QUESTIONS THAT THE STUDENTS HAVE COMPLETED. HAVE A CRACK AT THEM YOURSELF! WE ALSO LIKE TO PRACTISE OUR MATHS SKILLS WITH GAMES LIKE DUTCH BLITZ, WHICH REQUIRES IMPRESSIVE CONCENTRATION, AS WELL AS ADDITION AND SUBTRACTION OF POSITIVE AND NEGATIVE NUMBERS.**

# COUNTRY FAIR

## Raffle Prizes



- Boogie boards
- Soccer balls
- Netballs
- Footballs
- Soccer balls
- Frisbees
- Body Bumpers
- Tennis racquets + balls
- Electric Scooter
- Caps
- Snorkels
- Beach cricket
- Sports bags
- Zoingo Boingo
- Foot Golf set
- Mega Multigame 6 in 1
- Grip Ball
- Drink bottles

\*\*\*HEAPS OF PRIZES\*\*\*

Tickets on sale Week 10 and at the Country Fair.

### Stay Connected

There are a number of ways to stay up to date with news at Bellingin Public School. Apart from our weekly newsletter. How about trying:-

- Emails
- Bellingin Public School Facebook page.
- Bellingin Public School P and C Facebook page
- Skoolbag app
- Bellingin Public School website

facebook

SkoolBag

### Attachments with this Newsletter:

- New Canteen Menu
- Living Well Photography Competition

### Diary Dates

#### September

Tue 13 <sup>th</sup>	6 Aqua – Check In Assessment – Reading
Tue 13 <sup>th</sup>	Hockey Gala Day
Wed 14 <sup>th</sup>	6 Aqua – Check In Assessment – Writing
Wed 14 <sup>th</sup>	Cascade Camp for Year – <b>New date</b>
Thur 15 <sup>th</sup>	Cascade Camp for Year – <b>New date</b>
Thur 16 <sup>th</sup>	6 Aqua – Check In Assessment - Numeracy
Fri 16 <sup>th</sup>	Cascade Camp for Year – <b>New date</b>
Fri 16 <sup>th</sup>	Canteen Closed
Fri 16 <sup>th</sup>	Kinder Orientation – Tabloid Sports morning
Fri 16 <sup>th</sup>	Extra Yr. 6 High School transition
Sat 17 <sup>th</sup>	Junior and Senior Strings perform at Bellingin Community Markets
Mon 19 <sup>th</sup>	Canteen Closed
Wed 21 <sup>st</sup>	Education Week – BBQ Breakfast 7:30am
Wed 21 <sup>st</sup>	Whole School Assembly
Thur 22 <sup>nd</sup>	Public Holiday
Fri 23 <sup>rd</sup>	Extra Yr. 6 High School transition
Fri 23 <sup>rd</sup>	Country Fair 12:30 – 1:45
Fri 23 <sup>rd</sup>	End of Term Music Concert
Fri 23 <sup>rd</sup>	Last Day of Term 3

#### October

Mon 10 <sup>th</sup>	First Day of Term 4
Mon 24 <sup>th</sup>	P & C Meeting - School approach to teaching writing
Mon 24 <sup>th</sup>	Sydney Choir Excursion travel to Sydney
Tue 25 <sup>th</sup>	Sydney Choir Excursion –Town Hall performance
Wed 26 <sup>th</sup>	Sydney Choir Excursion travel home
Fri 28 <sup>th</sup>	WSA
Mon 31 <sup>st</sup>	Stage 3 Lake Keepit Excursion

#### November

Tue 1 <sup>st</sup>	Stage 3 Lake Keepit Excursion to
Fri 4 <sup>th</sup>	Stage 3 Lake Keepit Excursion
Fri 4 <sup>th</sup>	Kinder Orientation – Orientation Day 1
Fri 4 <sup>th</sup>	WSA
Fri 11 <sup>th</sup>	Kinder Orientation – Orientation Day 2
Tue 15 <sup>th</sup>	Book Fair
Wed 16 <sup>th</sup>	Book Fair
Thur 17 <sup>th</sup>	Book Fair
Fri 18 <sup>th</sup>	Book Fair
Fri 18 <sup>th</sup>	Kinder Orientation – Orientation Day 3
Mon 21 <sup>st</sup>	P & C meeting – transitions
Fri 25 <sup>th</sup>	Kinder Orientation – Orientation Day 4

#### December

Tue 13 <sup>th</sup>	Year 6 Farewell
Thur 15 <sup>th</sup>	Presentation Day
Mon 19 <sup>th</sup>	Year 6 Farewell Assembly
Mon 19 <sup>th</sup>	Last Day of Term 4

**Community Notices - Bellingin Public School does not endorse the following products or services.**





Fun for the kids

## Gondwana Nature Play

World Heritage  
Gondwana  
Rainforests

This is a seasonally varied hour of ranger-guided interactive games, discovery and play in the Dorrigo National Park for all children 5 - 10 years old.

When: **Tuesday 27 Sept** and **Tuesday 4 Oct**  
2 sessions: 10am - 11am and 11:30am - 12:30pm

### BOOKINGS ESSENTIAL: Phone 1300 072 757

or online: <https://www.nationalparks.nsw.gov.au/things-to-do/guided-tours/kids-gondwana-nature-play-5-to-10-years>  
Adults not required to attend

You can also book on the day at the Rainforest Centre information desk, but it's best to book ahead online to secure your spot.



# BELLINGHEN SWIMMING CLUB

**Starts Tuesday 11 October**

545pm - 7pm at Bellinghen Pool

Ages 5 - 18

Swim races, games, BBQ, carnivals  
Come for some swimming fun!

INQUIRIES TO  
[BELLINGHENSWIMCLUB@GMAIL.COM](mailto:BELLINGHENSWIMCLUB@GMAIL.COM)



## HOLIDAY SURF LESSONS!

PARENTS NSW VOUCHERS ACCEPTED HERE

### SAWTELL BEACH

9am & 10:15am Tue to Sat (NSW holidays)

EXTRA DATES & SESSIONS IN XMAS HOLIDAYS

1 hour lessons from \$25 per person \*Adult and kids groups includes all equipment

3 Day SurfGrom programs, 5-12yrs 9am - 11am Tue to Thu.  
2hr session each day, Surf Awareness, Beach/Surf Activities/Surf Skills.  
Includes Rip Curl hat & \$25 voucher.



## PRIVATE LESSONS

An exclusive surfing experience for individuals or groups.  
Available all year round for all ages and ability. You choose your day, time and location, or let us guide you with our local knowledge.

All lessons 1 hour

1 person \$100  
2 people \$100  
3 people \$120  
4 people \$140  
5 people \$150  
Extra's \$30 p/p

BOOK ONLINE: [WWW.SOLITARYISLANDSSURFSCHOOL.COM.AU](http://WWW.SOLITARYISLANDSSURFSCHOOL.COM.AU) 0438 561 370

We're coming to your community



**NSW Government services will be available  
in Bellinghen on Thursday 22nd September  
between 9:00am and 3:00pm**

This includes:

- driver licences, proof of identity documents, and Photo Card applications
- Driver Knowledge Tests
- Working With Children Checks
- NDIS Worker Check
- birth, death and marriage certificates
- up to 70 government rebates and savings
- Stay NSW and Parents NSW voucher applications

Find us at  
St Andrew's Church  
28 Hyde Street

Visit [service.nsw.gov.au](http://service.nsw.gov.au) or call  
13 77 88 to check our schedule.  
Unfortunately, sometimes our  
routes change at short notice.



The logo may not be used without the permission of the NSW Government.



